



SIGEVAL, S.A.

BUTTERFLY VALVES

“MANUAL CONTROLS”



UNE-EN-ISO 9001

Technical Information

Technical Catalogue
2006 (Ed.01)



* This Technical Information is property of SIGEVAL,S.A. and must not be used or copied without their specific written consent.

** Specifications are subject to change without notice.



SIGEVAL, S.A.

BUTTERFLY VALVES

TECHNICAL CATALOGUE



UNE-EN-ISO 9001

Technical Information

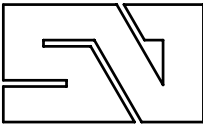
Technical Catalogue
2006 (Ed.01)

6.1 MANUAL CONTROLS

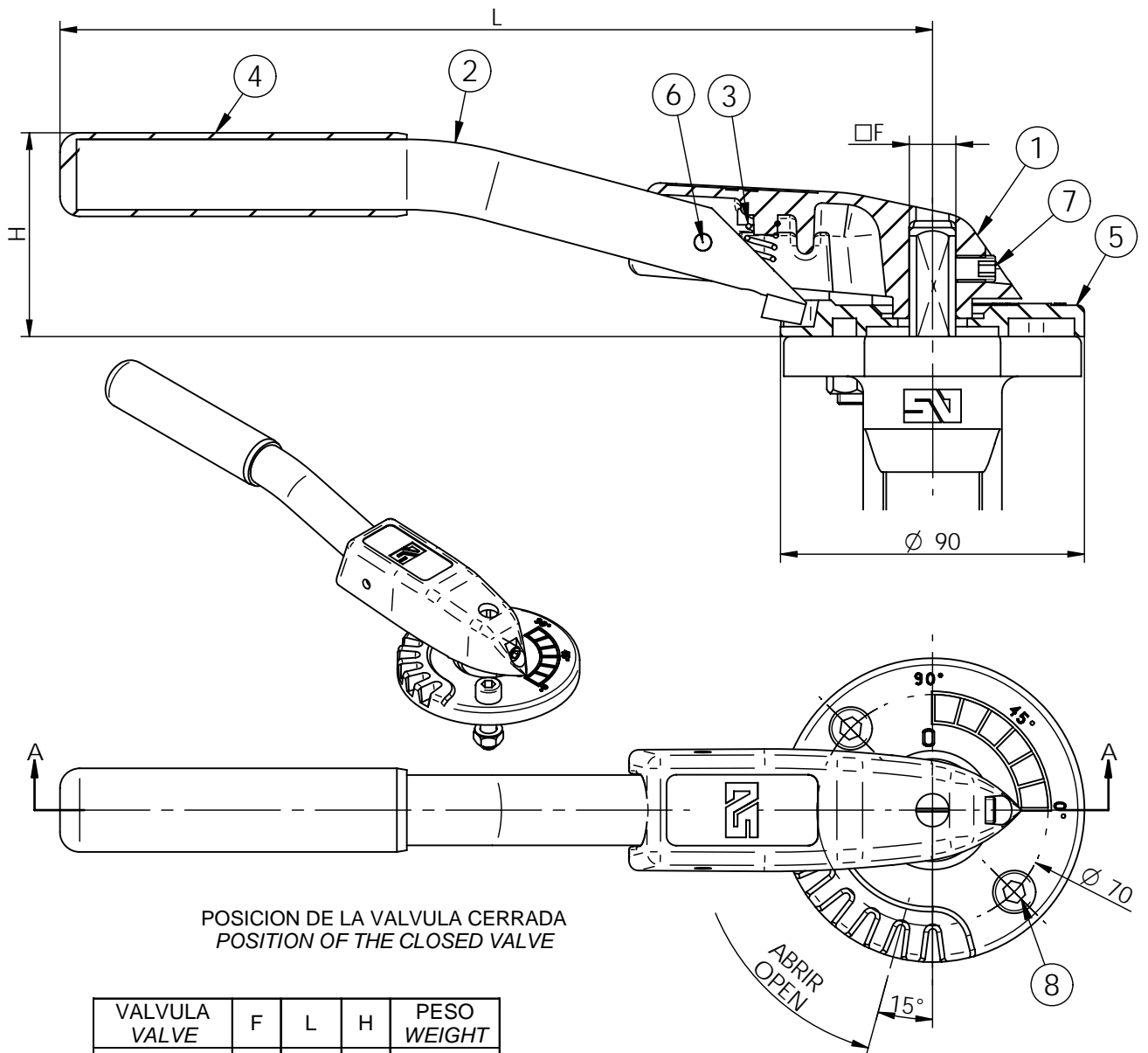
Designation:

Technical sheet N°:

- Hand lever type "MN" DN 32/200. General Dimensions. Ref.: 9-1
- Regulation hand lever type "MR" DN 32/200. General Dimensions. Ref.: 9-2
- Regulation hand lever type "MR" DN 250/300. General Dimensions. Ref.: 9-3
- Selection table for manual GearBox. Ref.: 9-5
- Operation by gearbox . General Dimensions.(1-2) Ref.: 9-6
- Operation by gearbox . General Dimensions.(2-2) Ref.: 9-7
- Selection table for declutchable GearBox. Ref.: 9-8
- Operation by declutchable gearBox for pneumatics actuators. General Ref.: 9-9
- Planetary gear reducing. General Dimensions. Ref.: 9-11
- Operation by flywheel. General Dimensions. Ref.: 9-12



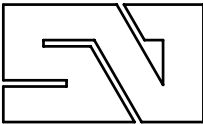
ACTO. PALANCA TIPO "MN" DN.32/200 - DIM. GENERALES
"MN" HANDLEVER DN.32/200 - GENERAL DIMENSIONS



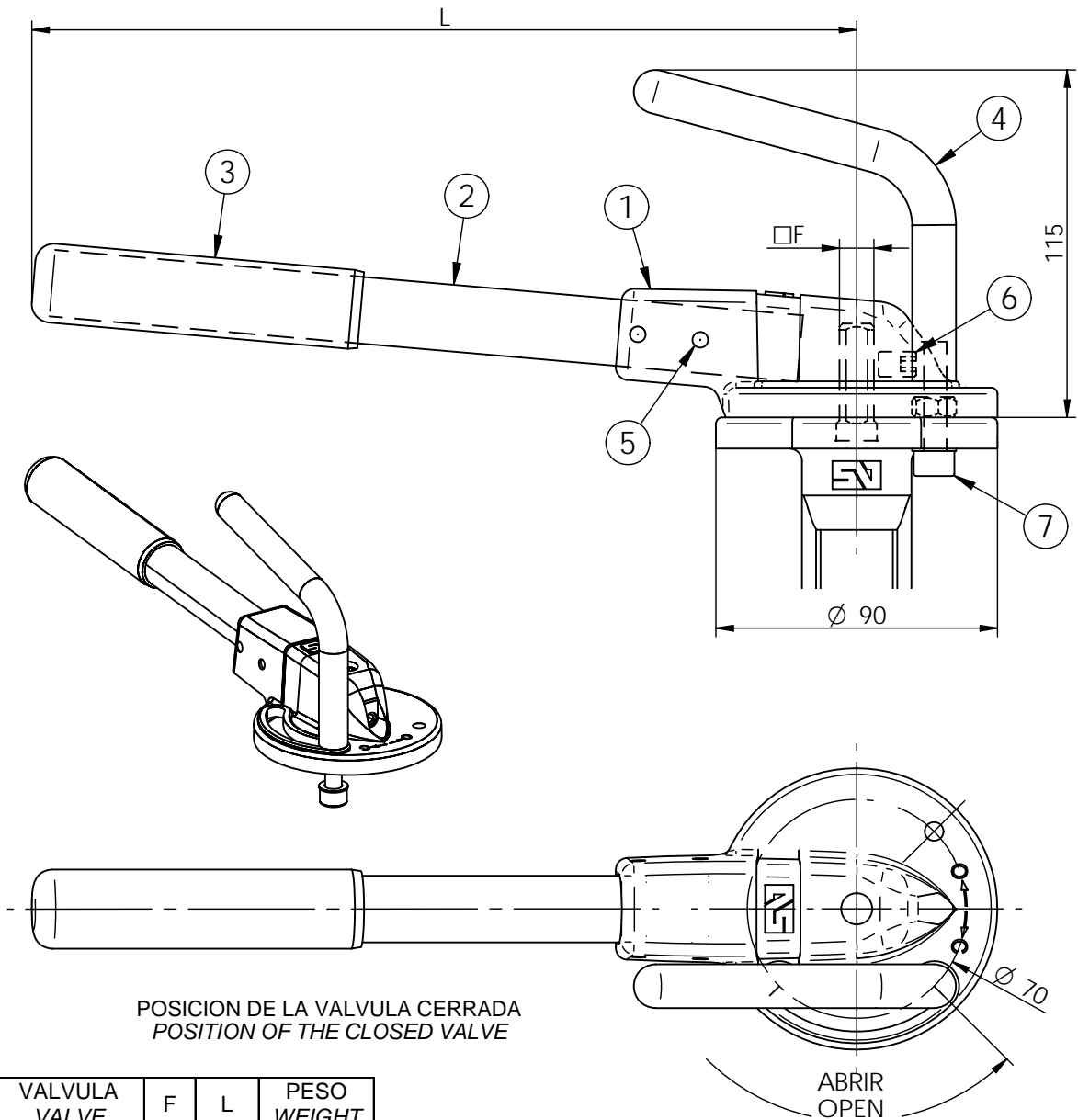
POSICION DE LA VALVULA CERRADA
 POSITION OF THE CLOSED VALVE

VALVULA VALVE	F	L	H	PESO WEIGHT
DN.32-65	11	220	49	0.40 Kg
DN.80-100	11	260	60	0.45 Kg
DN.125-150	14	315	75	0.55 Kg
DN.200	17	315	75	0.55 Kg

8	TORNILLO C/ ALLEN DIN 912 + TUERCA DIN 934 ALLEN SCREW DIN 912 + NUT DIN 934	ACERO CINCADO ZINC PLATED STEEL	1
7	ESPARRAGO ALLEN DIN 916 ALLEN SCREW DIN 916	ACERO CINCADO ZINC PLATED STEEL	1
6	PASADOR ELASTICO ELASTIC PIN	ACERO CARBONO CARBON STEEL	1
5	BRIDA TOPE END FLANGE	POLIAMIDA REFORZADA REINFORCE POLYAMIDE	1
4	FUNDA COVER	VINILO VINYL	1
3	MUELLE SPRING	ACERO INOX. AISI 302 STAINLESS STEEL AISI 302	1
2	BRAZO DE PALANCA LEVER ARM	TUBO DE ACERO + EPOXY STEEL TUBE + EPOXY	1
1	CABEZA DE PALANCA LEVER HEAD	FUND. ALUMINIO + EPOXY ALUMINIUM CAST + EPOXY	1
POS	DESIGNACION DESIGNATION	MATERIAL	CAN QTY



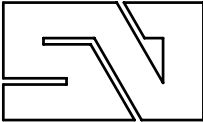
ACTO. PALANCA TIPO "MR" DN.32/200 - DIM.GENERALES
"MR" HANDLEVER DN.32/200 - GENERAL DIMENSIONS



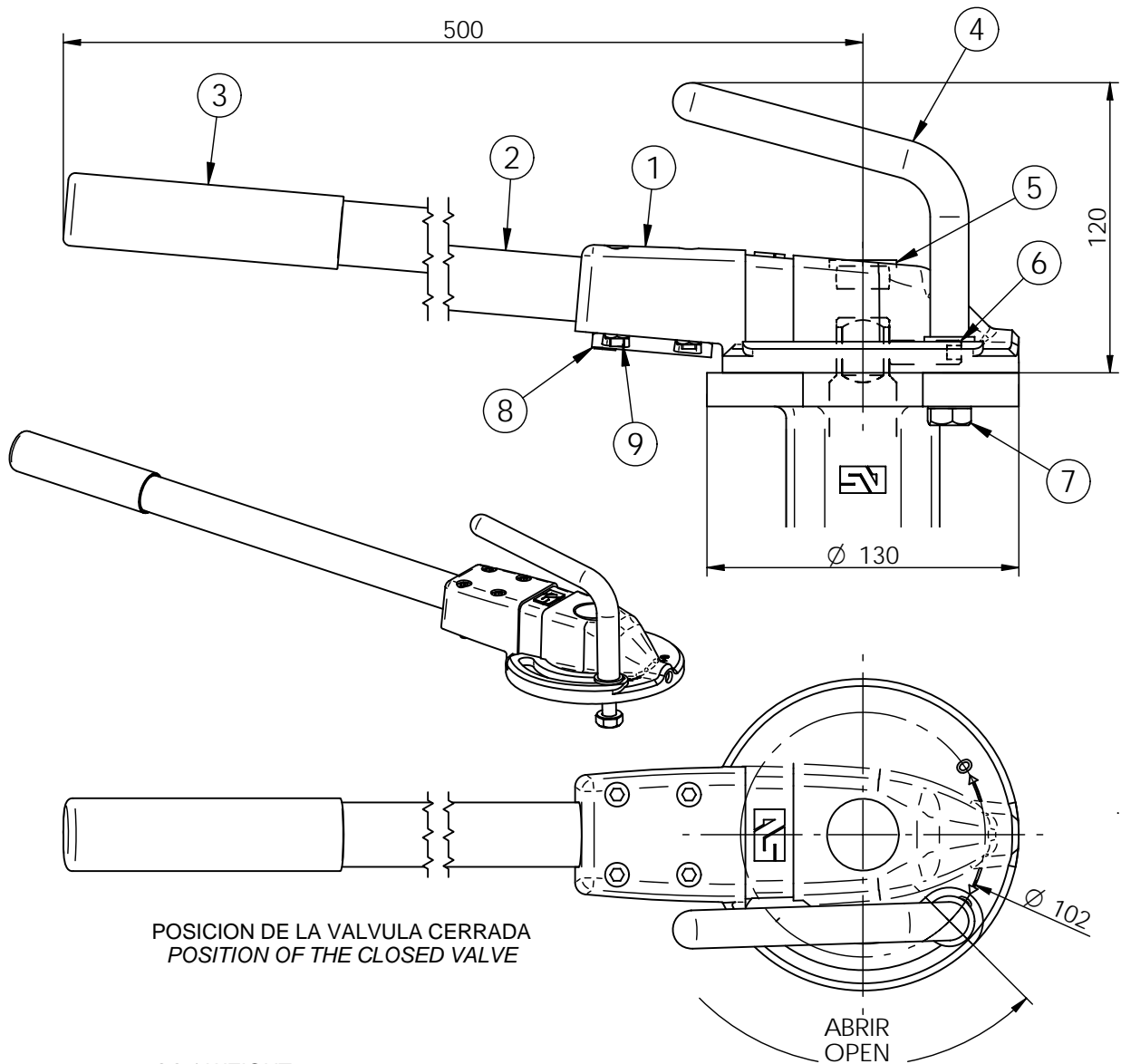
POSICION DE LA VALVULA CERRADA
 POSITION OF THE CLOSED VALVE

VALVULA VALVE	F	L	PESO WEIGHT
DN. 32/100	11	260	0,6 Kg.
DN. 125/150	14	310	0,7 Kg.
DN. 200	17	310	0,7 Kg.

7	TORNILLO C/ ALLEN DIN 912 + TUERCA DIN 934 ALLEN SCREW DIN 912 + NUT DIN 934	ACERO CINCADO ZINC PLATED STEEL	1
6	ESPARRAGO ALLEN DIN 916 ALLEN SCREW DIN 916	ACERO CINCADO ZINC PLATED STEEL	1
5	PASADOR ELASTICO ELASTIC PIN	ACERO CARBONO CARBON STEEL	2
4	PALANCA DE BLOQUEO BLOCKING LEVER	ACERO INOXIDABLE AISI 420 STAINLESS STEEL AISI 420	1
3	FUNDA COVER	VINILO VINYL	1
2	BRAZO DE PALANCA LEVER ARM	TUBO DE ACERO + EPOXY STEEL TUBE + EPOXY	1
1	CABEZA DE PALANCA LEVER HEAD	FUND. ALUMINIO + EPOXY ALUMINIUM CAST + EPOXY	1
POS	DESIGNACION DESIGNATION	MATERIAL	CAN QTY



ACTO. PALANCA TIPO "MR" DN.250/350 - DIM.GENERALES
"MR" HANDLEVER DN.250/350 - GENERAL DIMENSIONS



POSICION DE LA VALVULA CERRADA
 POSITION OF THE CLOSED VALVE

PESO / WEIGHT 1.7 Kg

9	TORNILLO C/ ALLEN DIN 912 + TUERCA DIN 934 ALLEN SCREW DIN 912 + NUT DIN 934	ACERO CINCADO ZINC PLATED STEEL	4
8	BRIDA FLANGE	FUND. ALUMINIO + EPOXY ALUMINIUM CAST + EPOXY	1
7	TORNILLO C/ ALLEN DIN 931 + TUERCA DIN 934 ALLEN SCREW DIN 931 + NUT DIN 934	ACERO CINCADO ZINC PLATED STEEL	1
6	ESPARRAGO ALLEN DIN 916 ALLEN SCREW DIN 916	ACERO CINCADO ZINC PLATED STEEL	1
5	TAPON COVER	POLIETILENO POLYETILENE	1
4	PALANCA DE BLOQUEO BLOCKING LEVER	ACERO INOXIDABLE AISI 420 STAINLESS STEEL AISI 420	1
3	FUNDA COVER	VINILO VINYL	1
2	BRAZO DE PALANCA LEVER ARM	TUBO DE ACERO + EPOXY STEEL TUBE + EPOXY	1
1	CABEZA DE PALANCA LEVER HEAD	FUND. ALUMINIO + EPOXY ALUMINIUM CAST + EPOXY	1
POS	DESIGNACION DESIGNATION	MATERIAL	CAN QTY

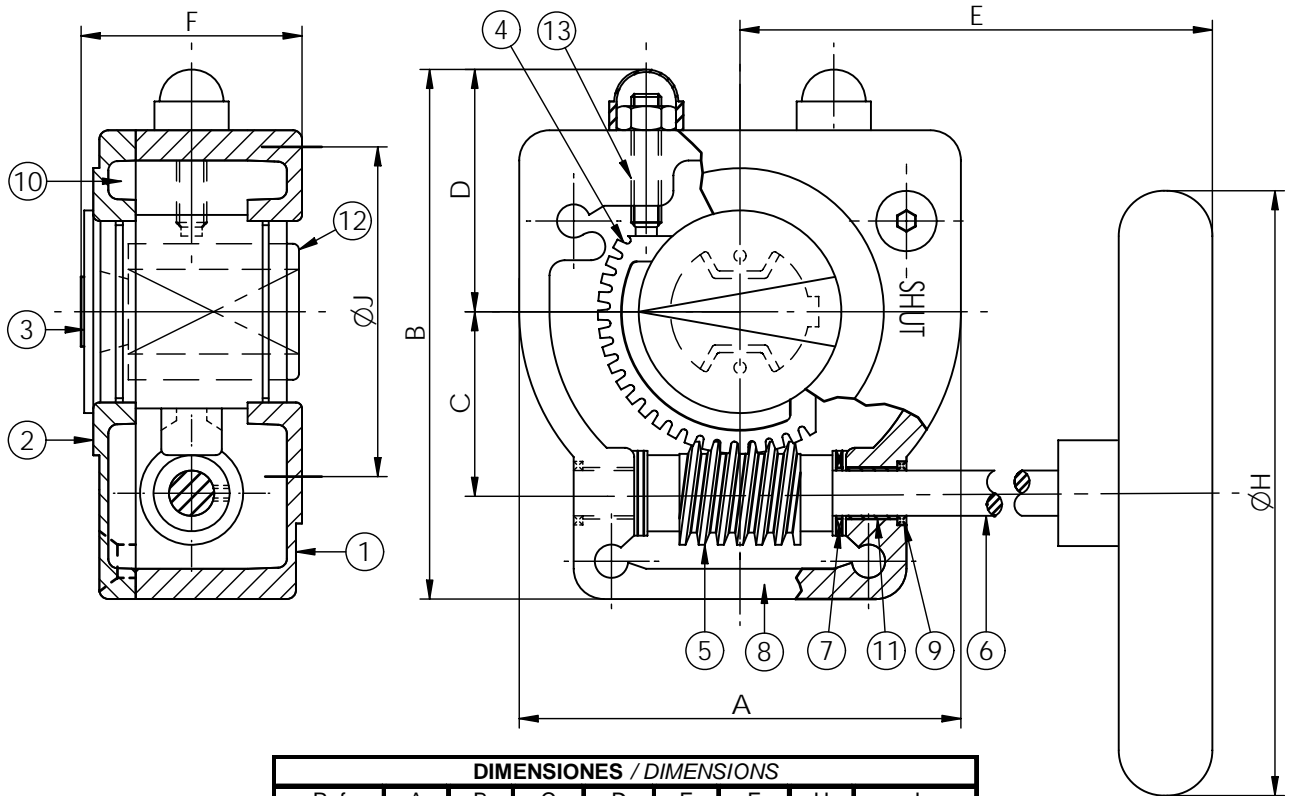


TABLA DE SELECCION DE REDUCTORES MANUALES
SELECTION TABLE MANUAL GEARBOXES

DN	PN-10	PN-16	DN
32	<p align="center">MDV-0 □11 – Volante / Handwheel Ø125</p>		32
40			40
50			50
65			65
80			80
100			100
125	<p align="center">MDV-1 □14 – Volante / Handwheel Ø160</p>		125
150			150
200	<p align="center">MDV-1A □17 – Volante / Handwheel Ø200</p>		200
250	<p align="center">MDV-2 □22 – Volante / Handwheel Ø250</p>		250
300			300
350			<p align="center">MDV-2A □22 – Volante / Handwheel Ø315</p>
400	<p align="center">MDV-2A □27 – Volante / Handwheel Ø315</p>	<p align="center">MDV-3 □27 – Volante / Handwheel Ø400</p>	400
450	<p align="center">MDV-3 □36 – Volante / Handwheel Ø400</p>		450
500			500
600	<p align="center">MDV-4 Ø60 – Volante / Handwheel Ø500</p>	<p align="center">MDV-5 Ø60 – Volante / Handwheel Ø500</p>	600
700	<p align="center">MDV-4 Ø65 – Volante / Handwheel Ø600</p>	<p align="center">MDV-5 Ø65 – Volante / Handwheel Ø600</p>	700
800	<p align="center">MDV-5 Ø80 – Volante / Handwheel Ø600</p>	<p align="center">MDV-6 Ø80 – Volante / Handwheel Ø600</p>	800

ACTO. REDUCTOR MANUAL TIPO "MDV" - DIM.GENERALES

OPERATION BY "MDV" GEARBOX - GENERAL DIMENSIONS



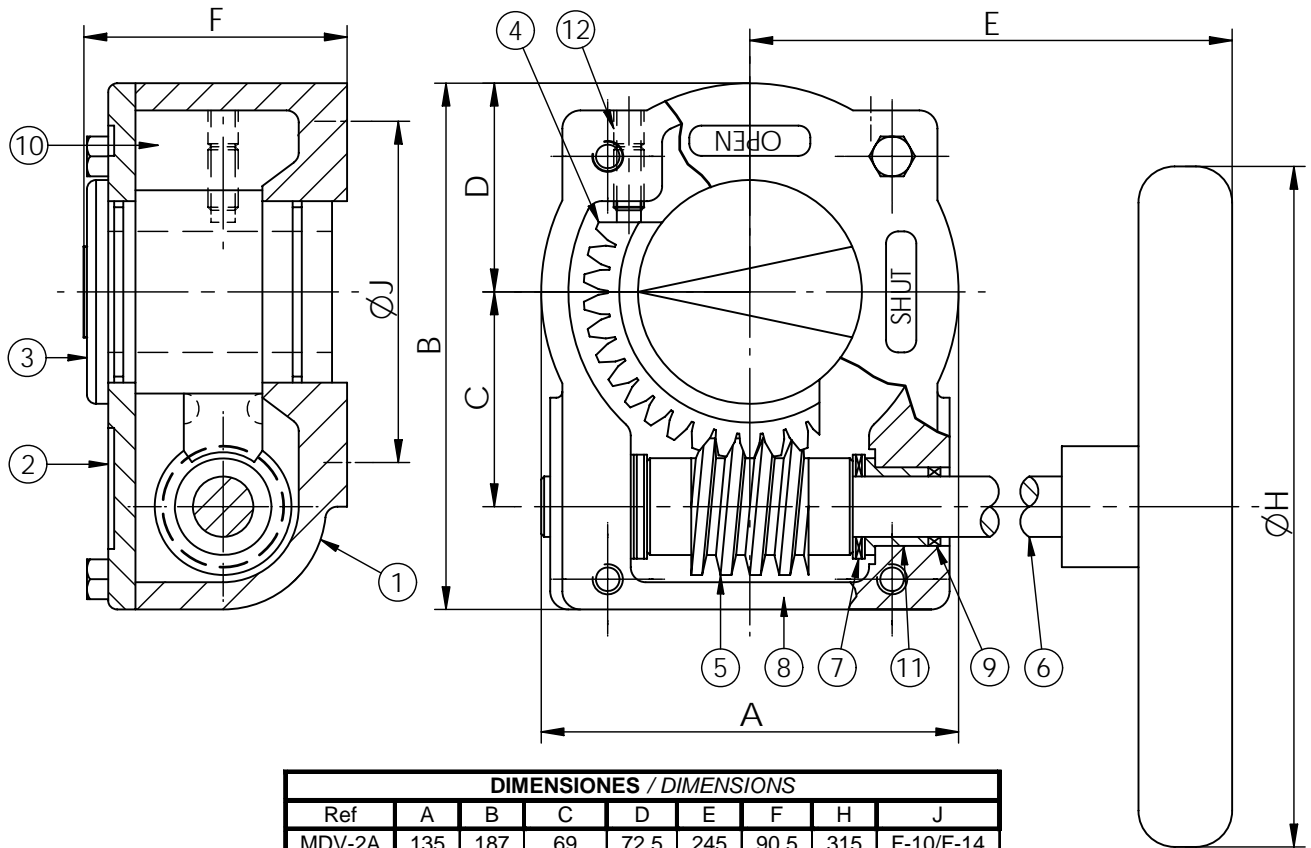
DIMENSIONES / DIMENSIONS								
Ref	A	B	C	D	E	F	H	J
MDV-0	84	112	43.5	44.5	128	52	125	F-07
MDV-1	84	112	43.5	44.5	141	52	160	F-07
MDV-1A	112	135	52.5	53.5	152	63.5	200	F-07/F-10
MDV-2	120	167	61	67	198	78	250	F-10/F-12

DATOS TECNICOS / TECHNICAL NOTE						
Ref.	Par Máx. Salida Max. Output Torque	Par Máx. Entrada Max. Input Torque	Relación Ratio	Vueltas para cerrar Turns to close	Peso Weight	Ventaja Mecánica Mechanical Advantage
MDV-0	200 Nm	16.8 Nm	40:1	10	1.2 Kg	11.9
MDV-1	200 Nm	16.8 Nm	40:1	10	1.4 Kg	11.9
MDV-1A	400 Nm	31.25 Nm	44:1	11	2.6 Kg	12.8
MDV-2	600 Nm	46.5 Nm	34:1	8.5	4.1 Kg	12.9

13	TORNILLO SET SCREW	ACERO 45H / DIN 915 STEEL 45H/DIN 915	2
12	INSERTOS INSERTS	ACERO SINTERIZADO SINTERED STEEL	1
11	COJINETE PLAIN BEARING	PERMAGLIDE P-10 PERMAGLIDE P-10	2
10	GRASA GREASE	GRASA LITILIO / CALCIO LITHIUM / CALCIUM GREASE	1
9	RETEN OIL SEAL	NITRILO NITRILE	2
8	JUNTA DE ESTANQUEIDAD GASKET	NITRILO / SILICONA NITRILE / SILICONE	1
7	CASQUILLO DE AGUA AXIAL NEEDLE BEARING	AXK-AS AXK-AS	2
6	EJE DEL SINFIN WORMSHAFT	ACERO INOXIDABLE AISI 303 STAINLESS STEEL AISI 303	1
5	SIN FIN WORM	ACERO CARBONO C45/AISI 1045 CARBON STEEL C45/AISI 1045	1
4	CORONA DENTADA QUADRANT	FUND. NODULAR GGG-40 - ASTM A356 NOD. CAST IRON GGG-40 - ASTM A356	1
3	INDICADOR DE POSICION POSITION INDICATOR	POLIETILENO POLYETILENE	1
2	PLACA DE CUBIERTA COVERPLATE	FUND. ALUMINIO ALUMINIUM CAST	1
1	CUERPO BODY	FUND. ALUMINIO ALUMINIUM CAST	1
POS	DESIGNACION DESIGNATION	MATERIAL	CAN QTY

ACTO. REDUCTOR MANUAL TIPO "MDV" - DIM.GENERALES

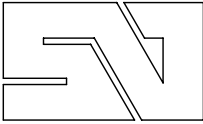
OPERATION BY "MDV" GEARBOX - GENERAL DIMENSIONS



DIMENSIONES / DIMENSIONS								
Ref	A	B	C	D	E	F	H	J
MDV-2A	135	187	69	72.5	245	90.5	315	F-10/F-14
MDV-3	180	235	96.5	91.5	274	100	400	F-12/F-14
MDV-4	282	326	137.5	140	416	128	500	F-16/F-25
MDV-5	282	326	137.5	140	448	128	600	F-16/F-25
MDV-6	376	396	180	156	479	135	600	F-25/F-30

DATOS TECNICOS / TECHNICAL NOTE						
Ref.	Par Max. Salida Max. Output Torque	Par Max. Entrada Max. Input Torque	Relacion Ratio	Vueltas para cerrar Turns to close	Peso Weight	Ventaja Mecanica Mechanical Advantage
MDV-2A	800 Nm	60 Nm	40:1	10	9.9 Kg	13.3
MDV-3	2000 Nm	131 Nm	48:1	12	20 Kg	15.3
MDV-4	4000 Nm	185 Nm	72:1	18	33.8 Kg	21.6
MDV-5	6500 Nm	95 Nm	267:1	67	41.8 Kg	68.4
MDV-6	12000 Nm	168 Nm	267:1	67	60.8 Kg	71

12	TORNILLO SET SCREW	ACERO 45H / DIN 915 STEEL45H / DIN 915	2
11	COJINETE PLAIN BEARING	ACERO SINTERIZADO SINTERED STEEL	2
10	GRASA GREASE	GRASA LITILLO / CALCIO LITHIUM / CALCIUM GREASE	1
9	RETEN OIL SEAL	NITRILO NITRILE	2
8	JUNTA DE ESTANQUEIDAD GASKET	NITRILO / SILICONA NITRILE / SILICONE	1
7	CASQUILLO DE AGUA AXIAL NEEDLE BEARING	AXK-AS AXK-AS	2
6	EJE DEL SINFIN WORMSHAFT	ACERO INOXIDABLE AISI 303 STAINLESS STEEL AISI 303	1
5	SIN FIN WORM	ACERO CARBONO C45/AISI 1045 CARBON STEEL C45/AISI 1045	1
4	CORONA DENTADA QUADRANT	FUND. NODULAR GGG-40 - ASTM A356 NOD. CAST IRON GGG-40 - ASTM A356	1
3	INDICADOR DE POSICION POSITION INDICATOR	FUND. GRIS GG-25 / ASTM A48 CAST IRON GG-25 / ASTM A48	1
2	PLACA DE CUBIERTA COVERPLATE	FUND. GRIS GG-25 / ASTM A48 CAST IRON GG-25 / ASTM A48	1
1	CUERPO BODY	FUND. GRIS GG-25 / ASTM A48 CAST IRON GG-25 / ASTM A48	1
POS	DESIGNACION DESIGNATION	MATERIAL	CAN QTY

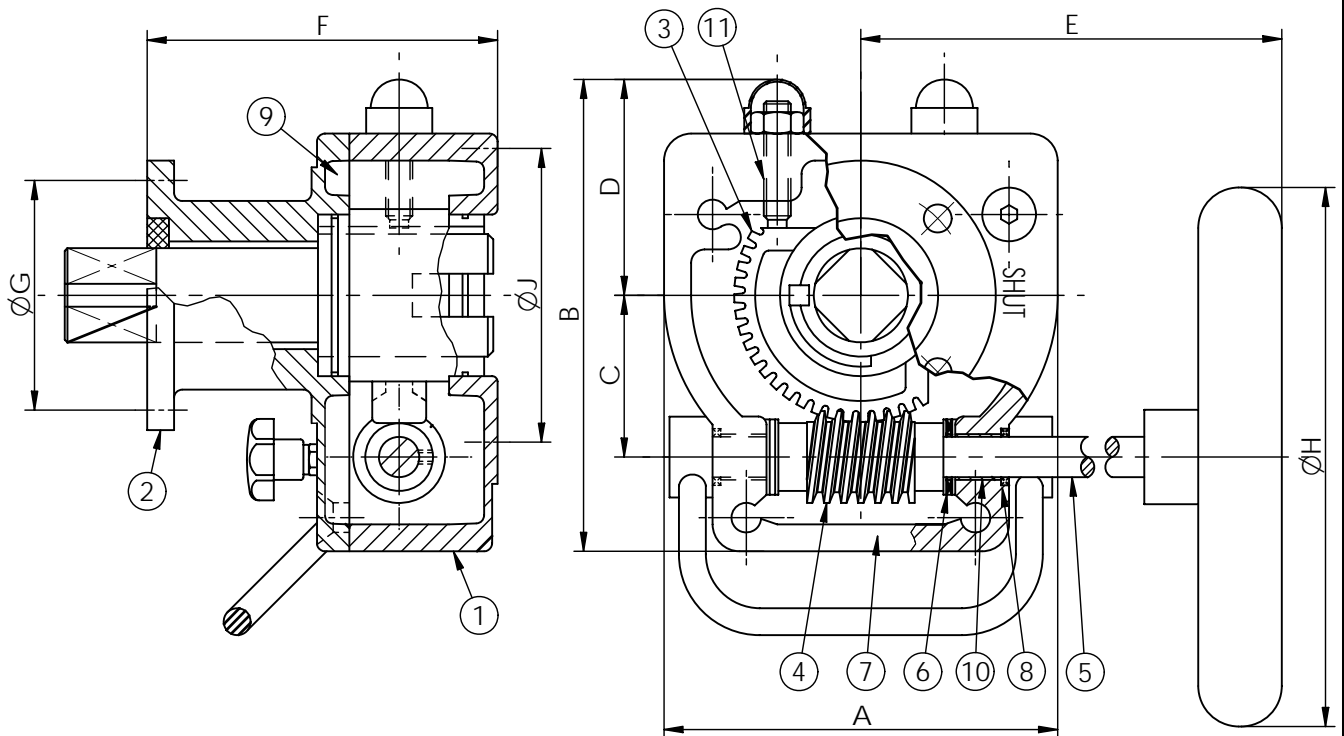


REDUCTORES DESEMBRAGABLES PARA ACTUADORES NEUMATICOS
DECLUTCHABLE GEARBOXES FOR PNEUMATIC ACTUATORS

DOBLE EFECTO <i>DOUBLE ACTING</i>	PN.6	PN.10	PN.16
RD115	DN.32/150	DN.32/150	DN.32/125
RD120	DN.200	DN.200	DN.150
RD130	DN.250/350	DN.250/300	DN.200/300
RD140	DN.400	DN.350/400	DN.350
RD150	DN.450/600	DN.450/500	DN.400/450

SIMPLE EFECTO <i>SPRING RETURN</i>	PN.6	PN.10	PN.16
RD115	DN.32/100	DN.32/100	DN.32/80
RD120	DN.125	DN.125	DN.100
RD125	DN.150/200	DN.150/200	DN.125/150
RD140	DN.250/350	DN.250/350	DN.200/300
RD150	DN.400	DN.400	DN.350

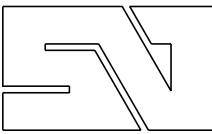
ACTO. REDUCTOR DESEMBRAGABLE PARA ACTO. NEUMATICO DECLUTCHABLE GEARBOXES FOR PNEUMATIC ACTUATORS



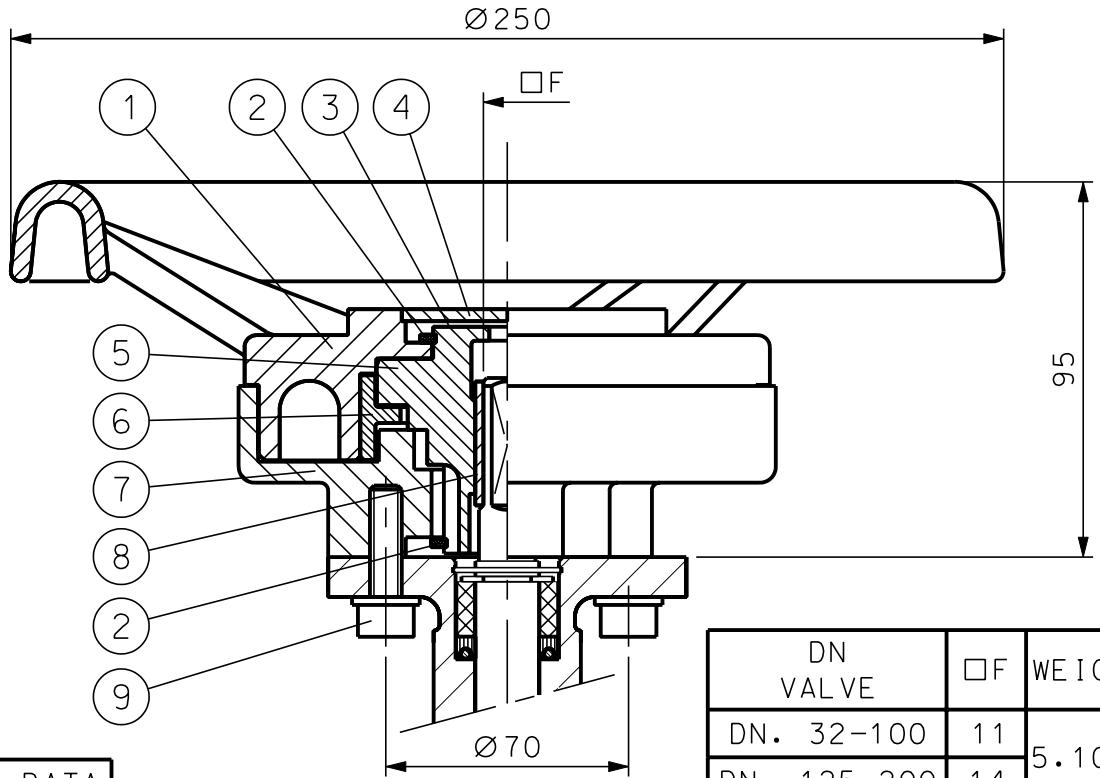
DIMENSIONES / DIMENSIONS									
Ref	A	B	C	D	E	F	G	H	J
RD-115	122	153	45	70	160	105	F-05/F-07	140	F-05/F-07
RD-120	143	172	50	83	170	122	F-07	225	F-07
RD-130	158.5	209	79	99	226.5	138	F-10	362	F-10
RD-140	206	255.5	90	123	263	163	F-12	462	F-12
RD-150	318	330	141	137	395	195	F-14	628	F-14

DATOS TECNICOS / TECHNICAL NOTE					
Ref.	Par Max. Salida Max. Output Torque	Par Max. Entrada Max. Input Torque	Relacion Ratio	Vueltas para cerrar Turns to close	Peso Weight
RD-115	125 Nm	8.8 Nm	41:1	10.25	4.4 Kg
RD-120	270 Nm	22.5 Nm	40:1	10	7.4 Kg
RD-130	800 Nm	55 Nm	48:1	10.25	12 Kg
RD-140	1150 Nm	75 Nm	49:1	10.25	22.6 Kg
RD-150	2500 Nm	120 Nm	44:1	10.25	52.3 Kg

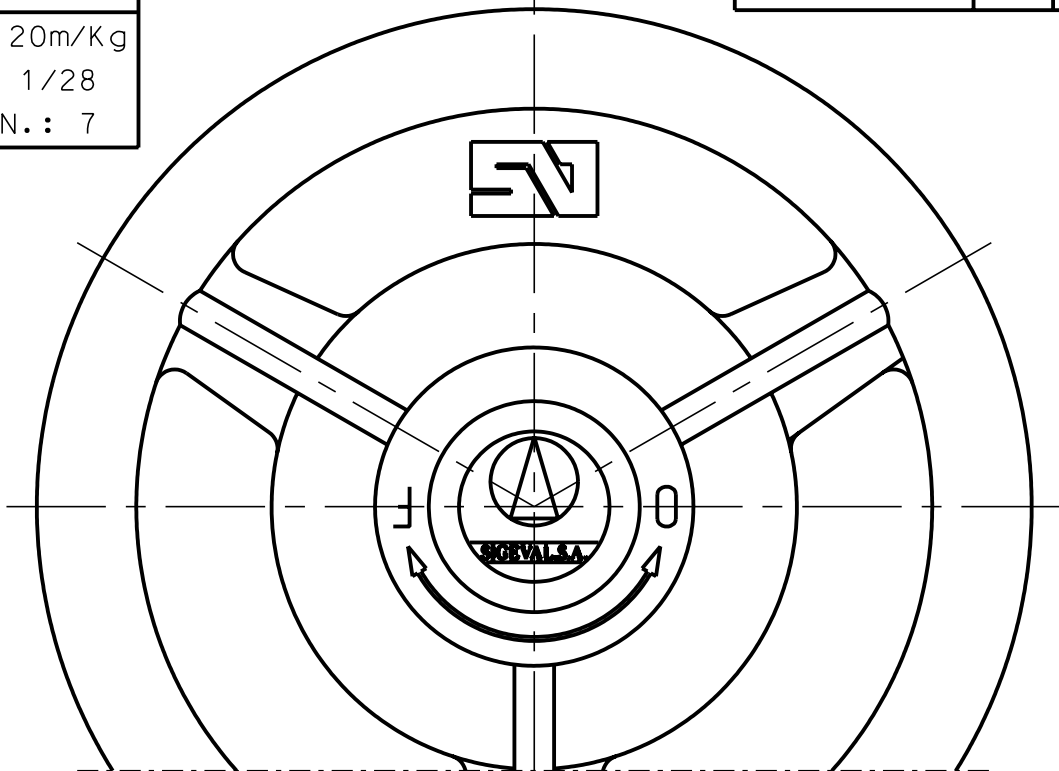
11	TORNILLO SET SCREW	ACERO 45H/DIN 915 STEEL 45H/DIN 915	2
10	COJINETE PLAIN BEARING	ACERO SINTERIZADO SINTERED STEEL	2
9	GRASA GREASE	GRASA LITILLO / CALCIO LITHIUM / CALCIUM GREASE	1
8	RETEN OIL SEAL	NITRILO NITRILE	2
7	JUNTA DE ESTANQUEIDAD GASKET	NITRILO / SILICONA NITRILE / SILICONE	1
6	CASQUILLO DE AGUA AXIAL NEEDLE BEARING	AXK-AS AXK-AS	2
5	EJE DEL SINFIN WORMSHAFT	ACERO INOXIDABLE AISI 303 STAINLESS STEEL AISI 303	1
4	SIN FIN WORM	ACERO CARBONO C45/AISI 1045 CARBON STEEL C45/AISI 1045	1
3	CORONA DENTADA QUADRANT	FUND. NODULAR GGG-40 - ASTM A356 NOD. CAST IRON GGG-40 - ASTM A356	1
2	PLACA DE CUBIERTA COVERPLATE	FUND. GRIS GG-25 / ASTM A48 CAST IRON GG-25 / ASTM A48	1
1	CUERPO BODY	FUND. GRIS GG-25 / ASTM A48 CAST IRON GG-25 / ASTM A48	1
POS	DESIGNACION DESIGNATION	MATERIAL	CAN QTY



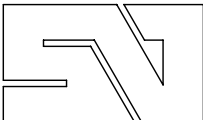
PLANETARY GEAR – REDUCING OPERATION
 TYPE "MDVV" DN. 32-200 GENERAL DIMENSIONS



THECNICAL DATA
TORQUE: 20m/Kg
RATIO: 1/28
TURNS N.: 7

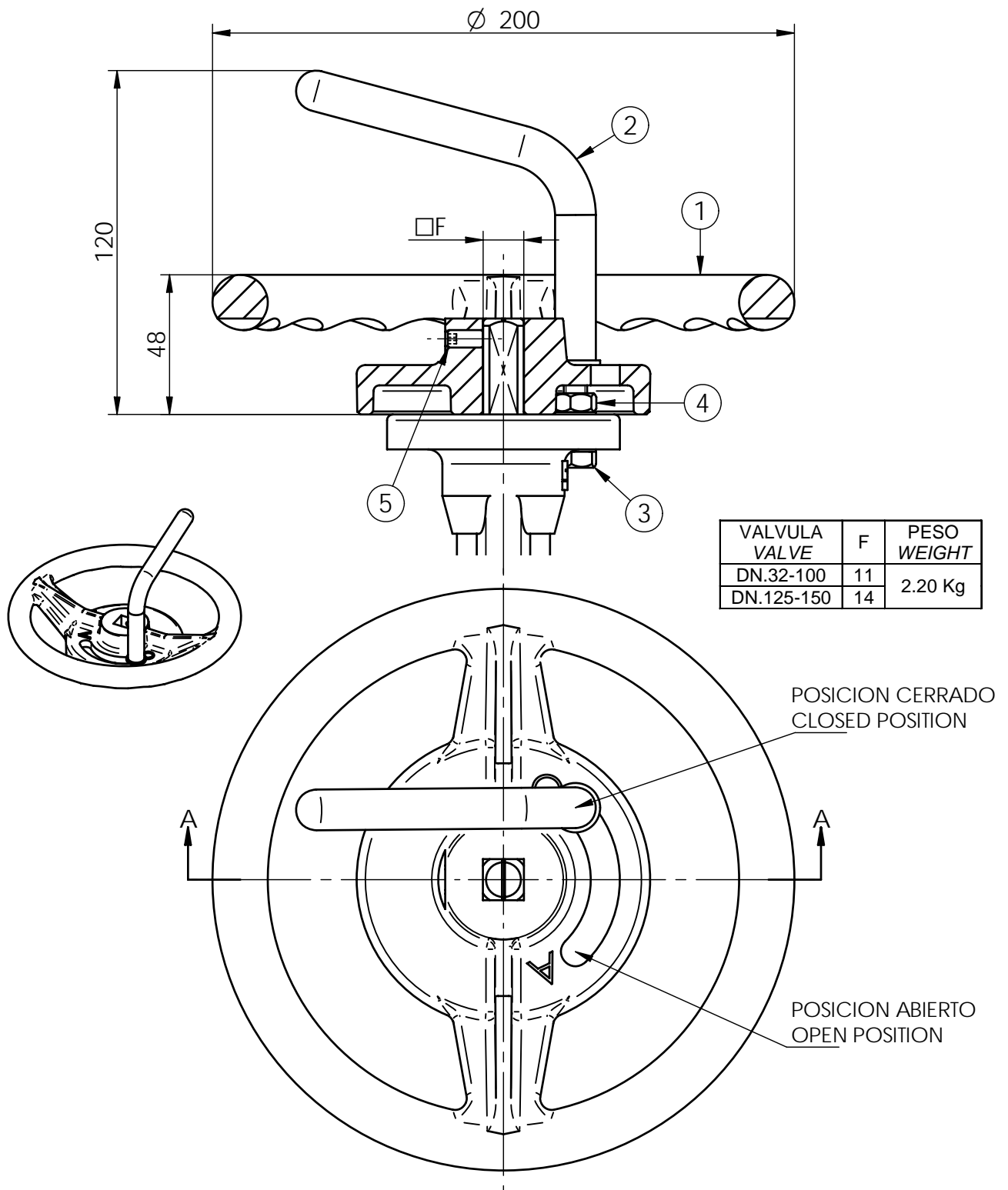


9	ALLEN SCREW DIN 912	CADMIUM STEEL M8x30	4
8	BUHSING DN.32/100	CARBON STEEL	1
7	LID	NOD.CAST IRON DIN GGG-45	1
6	CROWN	NOD.CAST IRON DIN GGG-45	1
5	PINION	NOD.CAST IRON DIN GGG-45	1
4	PRESSURE SEALED LID	COLOURLESS METHACRYLATE	1
3	POSITION INDICATOR		1
2	ZEGI RING	BRONZED STEEL UNE 26074	2
1	FLYWHEEL	CAST IRON DIN GG 25	1
POS	DESIGNATION	MATERIAL	QTY



VOLANTE TIPO "V" DN.32/150 - DIM. GENERALES

FLYWHEEL "V" TYPE DN.32/150 - GENERAL DIMENSIONS



5	ESPARRAGO ALLEN DIN 916 ALLEN SCREW DIN 916	ACERO CINCADO ZINC PLATED STEEL	1
4	TUERCA DIN 934 ECROW	ACERO CINCADO ZINC PLATED STEEL	1
3	TORNILLO EXAG. DIN 933 EXAG. SCREW DIN 933	ACERO CINCADO ZINC PLATED STEEL	1
2	PALANCA DE BLOQUEO BLOCKING LEVER	TUBO DE ACERO + EPOXY STEEL TUBE + EPOXY	1
1	VOLANTE TIPO "V" FLYWHEEL	FUND. GRIS + EPOXY GREY CAST IRON + EPOXY	1
POS	DESIGNACION DESIGNATION	MATERIAL	CAN QTY